

GENERAL DESCRIPTION

PARKING BRAKE

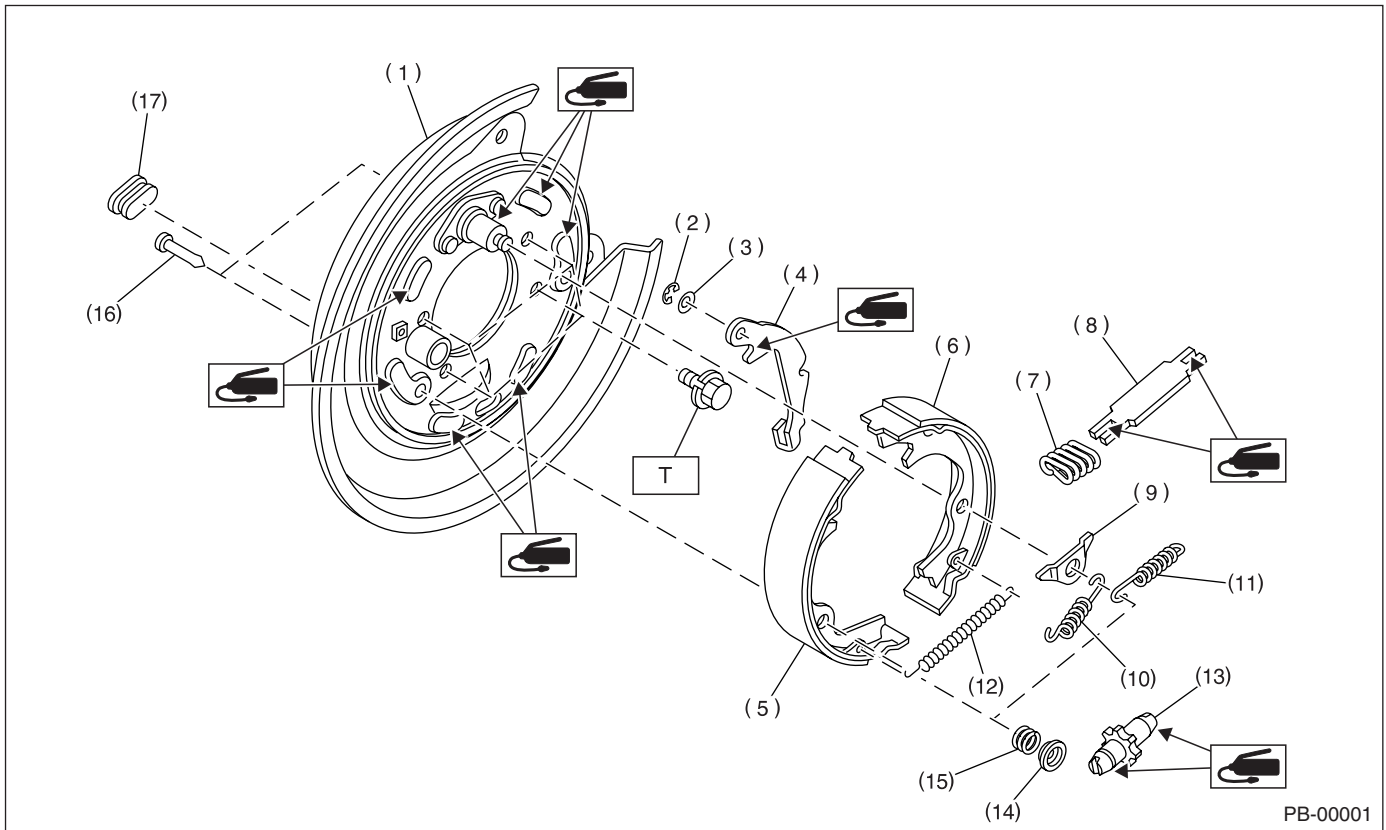
1. General Description

A: SPECIFICATIONS

Model	Rear drum brake	Rear disc brake
Type	Mechanical on rear brakes, drum in disc	
Effective drum diameter mm (in)	228.6 (9)	170 (6.69)
Lining dimensions (length × width × thickness) mm (in)	219.4 × 35.0 × 4.1 (8.64 × 1.378 × 0.161)	163.1 × 30.0 × 3.2 (6.42 × 1.181 × 0.126)
Clearance adjustment	Automatic adjustment	Manual adjustment
Lever stroke notches/N (kgf, lb)	7 to 8/196 (20, 44)	

B: COMPONENT

1. PARKING BRAKE (REAR DISC BRAKE)



- | | | |
|------------------------------------|------------------------------|----------------------------|
| (1) Back plate | (8) Strut | (15) Shoe hold-down spring |
| (2) Retainer | (9) Shoe guide plate | (16) Shoe hold-down pin |
| (3) Spring washer | (10) Primary return spring | (17) Adjusting hole cover |
| (4) Lever | (11) Secondary return spring | |
| (5) Parking brake shoe (Primary) | (12) Adjusting spring | |
| (6) Parking brake shoe (Secondary) | (13) Adjuster | |
| (7) Strut spring | (14) Shoe hold-down cup | |

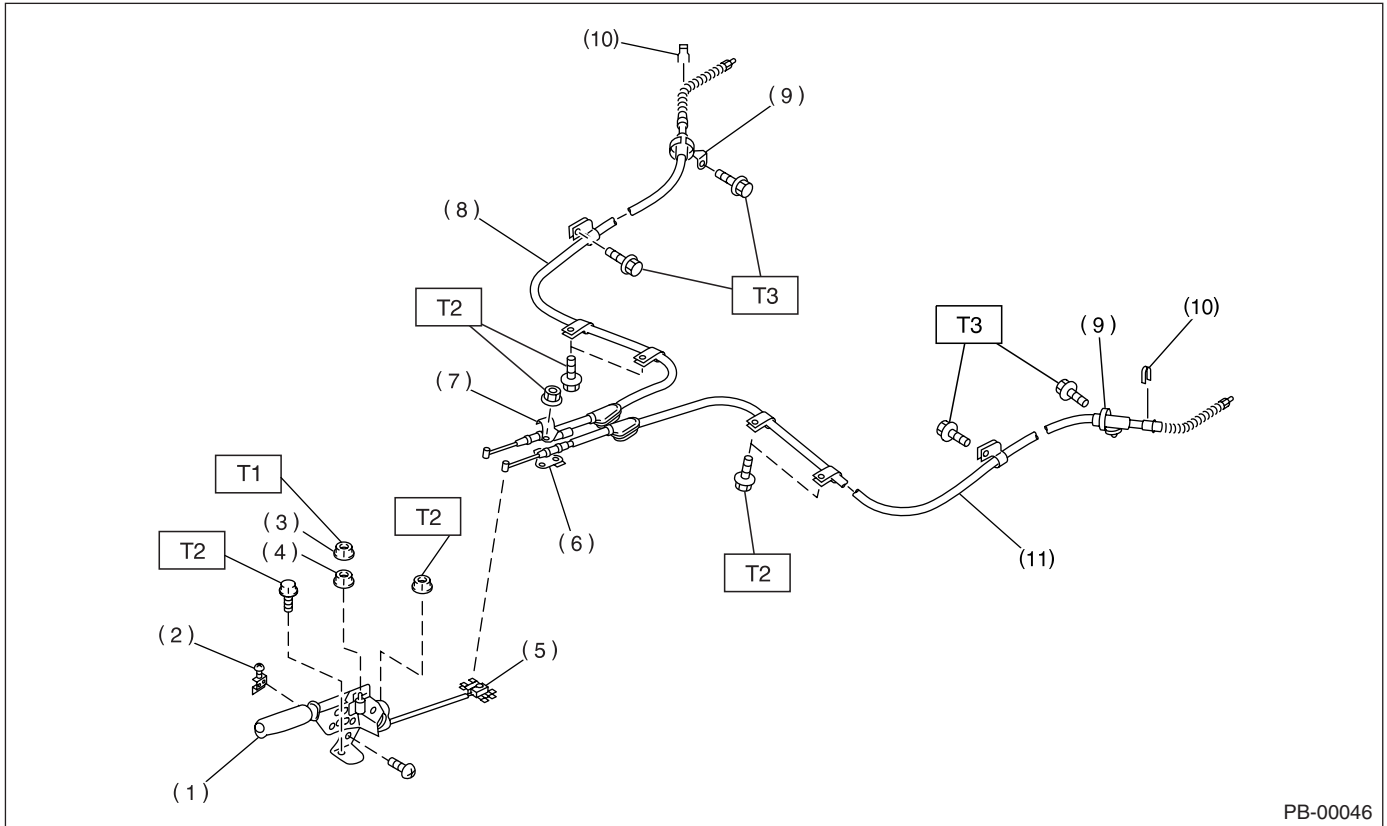
Tightening torque: N·m (kgf·m, ft·lb)

T: 53 (5.4, 39.1)

GENERAL DESCRIPTION

PARKING BRAKE

2. PARKING BRAKE CABLE



PB-00046

- | | |
|--------------------------|---|
| (1) Parking brake lever | (7) Clamp |
| (2) Parking brake switch | (8) Parking brake cable RH |
| (3) Lock nut | (9) Cable guide |
| (4) Adjusting nut | (10) Clamp (Rear disc brake model only) |
| (5) Equalizer | (11) Parking brake cable LH |
| (6) Bracket | |

Tightening torque: N·m (kgf·m, ft·lb)

T1: 6 (0.6, 4.3)

T2: 18 (1.8, 13.0)

T3: 32 (3.3, 23.6)

C: CAUTION

- Wear working clothing, including a cap, protective goggles, and protective shoes during operation.
- Before removal, installation or disassembly, be sure to clarify the failure. Avoid unnecessary removal, installation, disassembly, and replacement.
- Be careful not to burn your hands, because each part on the vehicle is hot after running.
- Use SUBARU genuine grease etc. or the equivalent. Do not mix grease etc. with that of another grade or from other manufacturers.
- Be sure to tighten fasteners including bolts and nuts to the specified torque.
- Place shop jacks or safety stands at the specified points.
- Before securing a part on a vise, place cushioning material such as wood blocks, aluminum plate, or shop cloth between the part and the vise.
- Keep grease etc. away from parking brake shoes.